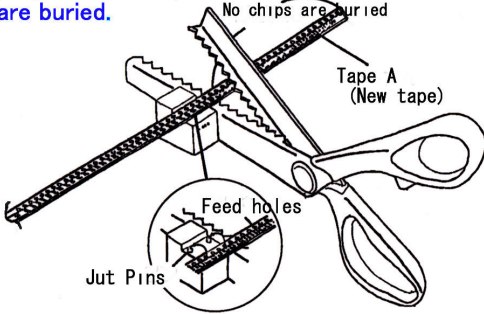
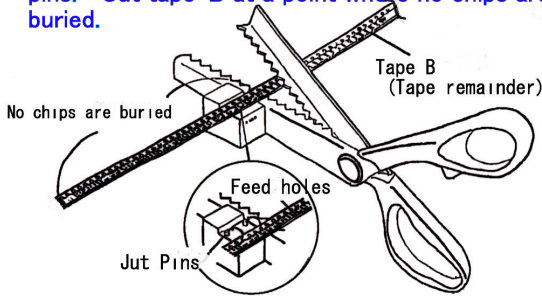


**PROCEDURES / HOW TO JOINT
CARRIER TAPES**

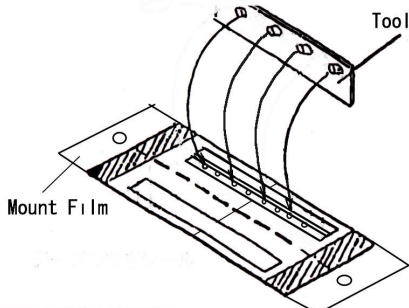
- ① Set tape-A's two feed holes onto scissors' jut pins. Cut tape-A at a point where no chips are buried.



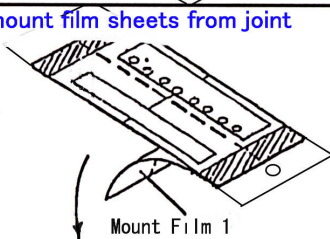
- ② Set tape-B's two feed holes onto scissors' jut pins. Cut tape-B at a point where no chips are buried.



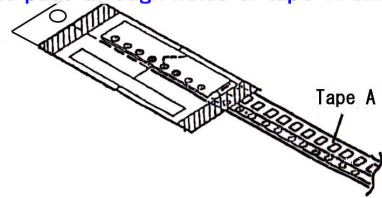
- ③ Set tool's pins onto joint tape holes.



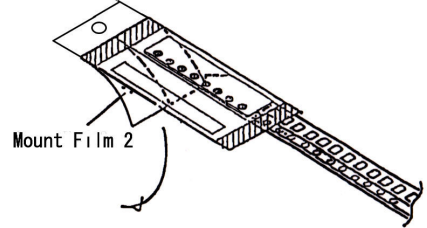
- ④ Remove one of mount film sheets from joint tape.



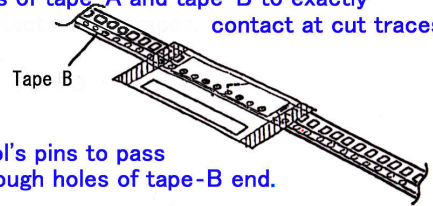
- ⑤ Apply joint tape to tape-A end. Tool's pins to pass through holes of tape-A end.



- ⑥ Remove the other of mount film sheets.

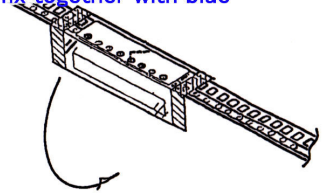


- ⑦ Apply tape-B to assembled unit by ⑤ above. Tips of tape-A and tape-B to exactly contact at cut traces.



Tool's pins to pass through holes of tape-B end.

- ⑧ Fold down joint tape around backs of tape-A and tape-B and fix together with blue adhesive bit.



- ⑨ Remove tool. Peel off cover tape from one of its blue corners.

