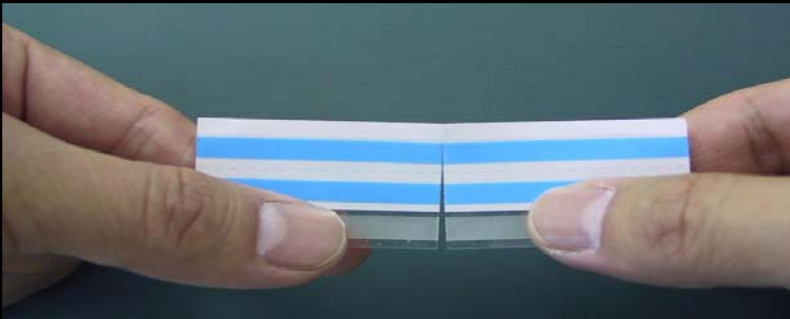


Joining 8mm Component Carrier Tapes with Fuji Joint Tape **FC8A**

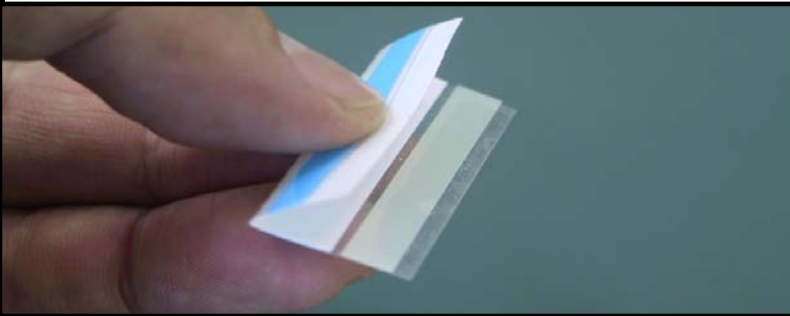
- ① Fit pins of scissors into tape feeding holes and cut off the boundary line in order to separate the part with components from the part with no components.



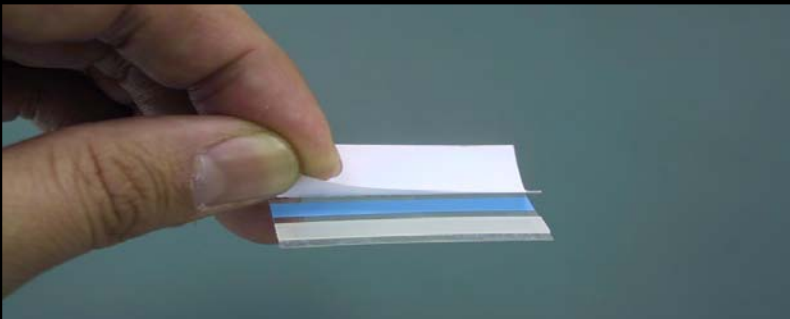
- ② Separate a positioning guide by hand.



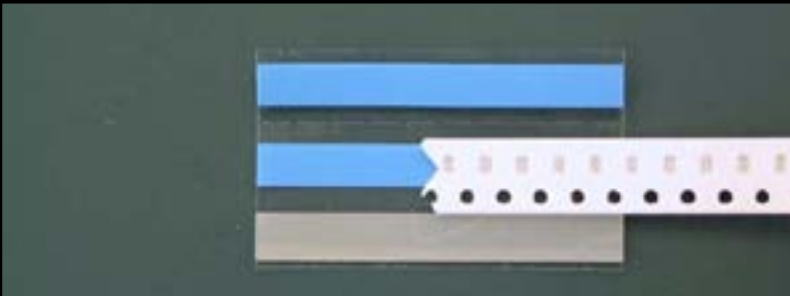
- ③ Bend once a positioning guide along a fold to make a bending line.



- ④ Peel a white cover from the Joint Tape of a positioning guide.



- ⑤ Set one of the two separated tapes on the positioning guide, and stick the cover tape downward. (A row of feeding holes must be along a guide line.)



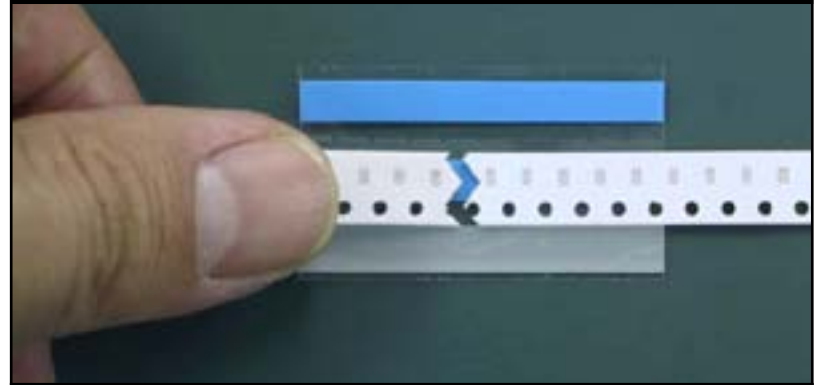
Note:

※Release-agent coating onto the cover tape may cause to weaken tape joint adhesiveness.

Use a proper release-agent if coating required

※When used for emboss carrier tapes, apply the Joint Tapes for better joint stabilization after lifting the cut ends of the cover tape as sketched.

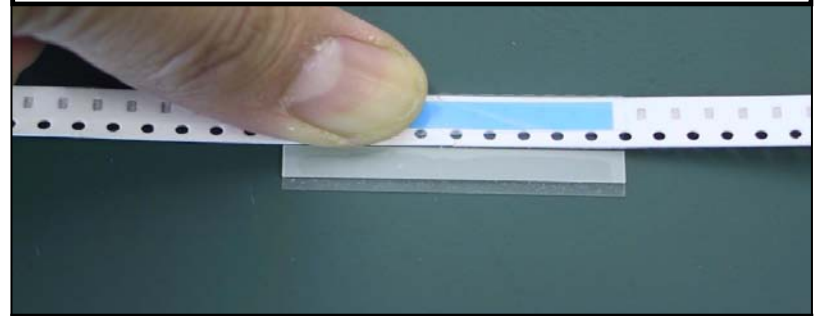
- ⑥ Set another one of separated tapes so as the section of both tapes are fit.



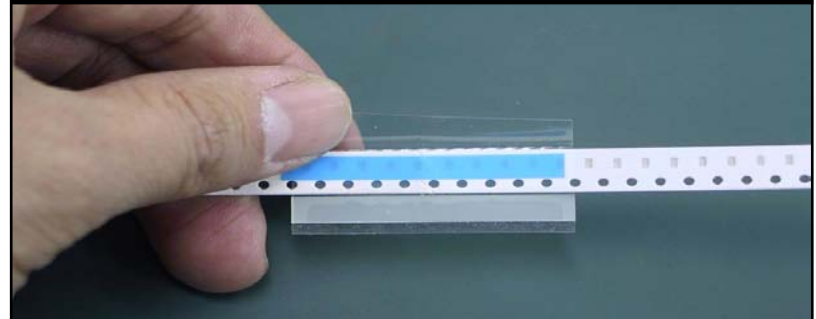
- ⑦ Bend the Joint Tape along a bending line.



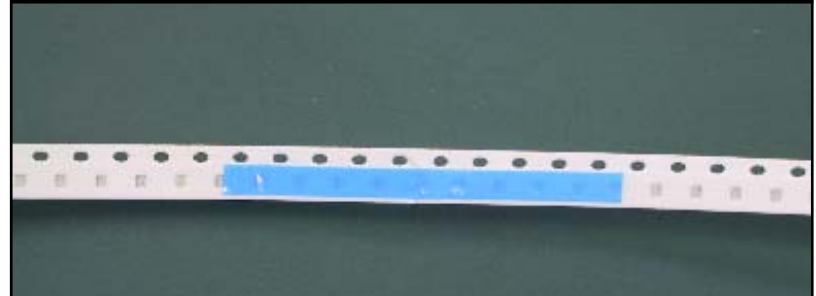
- ⑧ Rub the entire part of the Joint Tape with your finger to connect tapes completely.



- ⑨ Peel a transparent tape from the Joint Tape of a positioning guide.



- ⑩ All completed.
※Be sure a blue tape sticks completely to the carrier tape base.



Sold throughout Europe & USA by:

Mid America (UK) Ltd

Hill House, Rockfield, Tain, IV20 1RF, Scotland, UK

tel: 44 1862 871 555

fax: 44 1862 871 666

email: mauk@btconnect.com

www.mauksmt.com

Suited to Fuji NXT, Europlacer, Juki, iPulse, Yamaha, Quad, etc.,